

The Problem

The manufacture of precast concrete tilt panels is both an exacting and very physical process. The end finish of the panel is determined by the smoothness of the panel cast deck and the work of the operators at the yard.

To clean the casting tables and panels – grinders and scrappers are used to remove the excess semi dried and hard set concrete. This creates DUST. Lots of it. Add in the fact that the casting sheds are generally wide open spaces – wind blowing through adds an extra challenge.

The Solution

To collect the dust and rubble from beside the casting table and along the storage and staging areas a Hako Sweepmaster B650 walk behind sweeper with Dust Stop brush cover was installed.

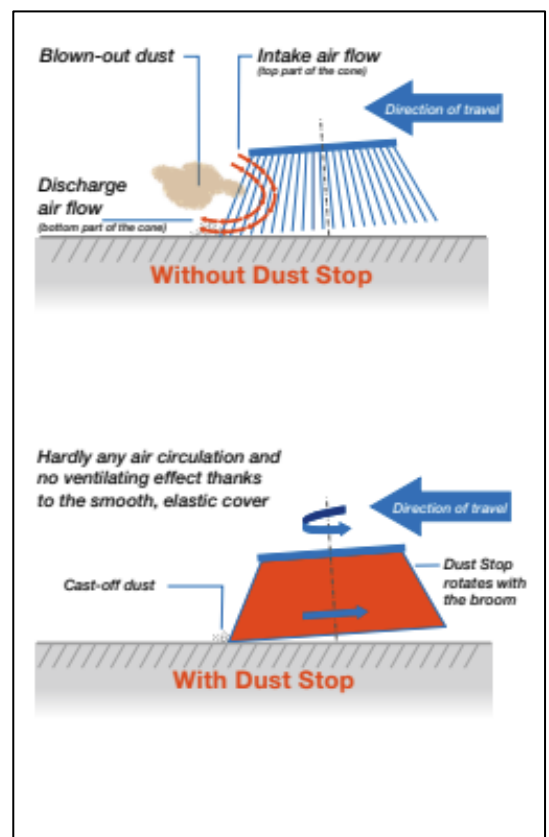
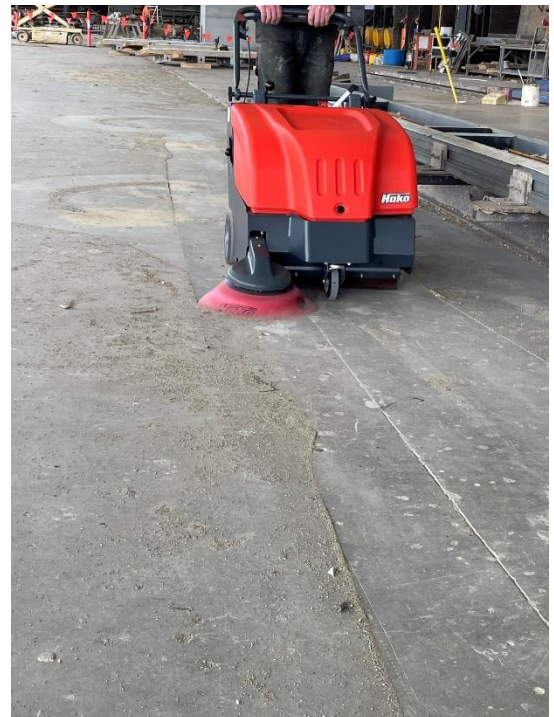
To get down the narrow walkways around the table – a battery powered walk behind unit was the easy choice.

Adding the DUST STOP brush covering for keeping airborne dust to a minimum. The results were immediate!

With industry “best practice” in mind the site also selected the upgraded Plate Filter – going with the High Class unit for improved filtration – protecting all in the area.

The Benefits

- No more manual sweeping
 - No longer just pushing the dust around the site
- Less reworks on concrete panels
 - no excess dust means no external marking or damage to panels
- Improved staff morale – the site looks better
- Improved customer confidence –
 - a clean site, means clean work,
 - which in turn means more work!



Contact Us

www.hakoaustralia.com.au

P: 1800 257 221

E: hksales@hakoaustralia.com.au